

CONCEALED SOLUTIONS & FLUSH PLATES



SIAMP

Sanitary expertise
& water friendly

A SPECIALIST AT YOUR SERVICE FOR OVER 70 YEARS.

FOUNDED IN 1947, SIAMP DESIGNS AND MANUFACTURES INNOVATIVE SANITARY PRODUCTS FOR THE BATHROOM ENVIRONMENT : WALL HUNG SOLUTIONS, FLUSH PLATES, FLUSHING TECHNOLOGY, CISTERNS AND TOILET SEATS. WHETHER IT'S A COMMERCIAL PROJECT OR THE RENOVATION OF A DOMESTIC BATHROOM, SIAMP HAS THE SOLUTION.

Pioneer of the plastic toilet seat and now a global leader of flushing technology, SIAMP is the brand chosen by leading ceramic manufacturers to provide the flushing solution throughout the world.

Besides the head office based in Monaco, SIAMP is present across 5 continents through a network of 8 sales subsidiaries, 6 production sites and hundreds of distributors, for the benefit of millions of users.

To remain a sanitary specialist in this evolving market, we invest in new technologies to develop new products and perfect the efficiency of manufacturing.

Understanding the importance of water sustainability, SIAMP continues to develop technical solutions to protect this resource for future generations.

SIAMP is regularly at the forefront of innovation recognised by a large number of international patents.



INTERNATIONAL PRESENCE	4
SUPPORTING WATER EFFICIENCY	5
CASE STUDIES	8-9
WC FRAMES	10
INGENIO WC FRAMES	11
INGENIO WC PACKS	11
WC FRAMES LOW HEIGHT	12
WC FRAMES TALL & INTRASLIM	13
CONCEALED CISTERNS	14-15
FLUSH PLATES	16-21
WALL FRAME & FLUSH PLATE COMPATIBILITY	21
NOTES	22
PRODUCT DETAILS	23

SIAMP IS PRESENT THROUGHOUT EUROPE, AND WORLDWIDE.



INNOVATIONS - SOLUTIONS - QUALITY CERTIFICATION
 SUSTAINABILITY - CUSTOMER SERVICE.



SIAMP is the origin of many innovations in the world of toilets and puts all its resources into designing and manufacturing innovative eco-efficient solutions that guarantee hygiene, comfort and responsible water management.

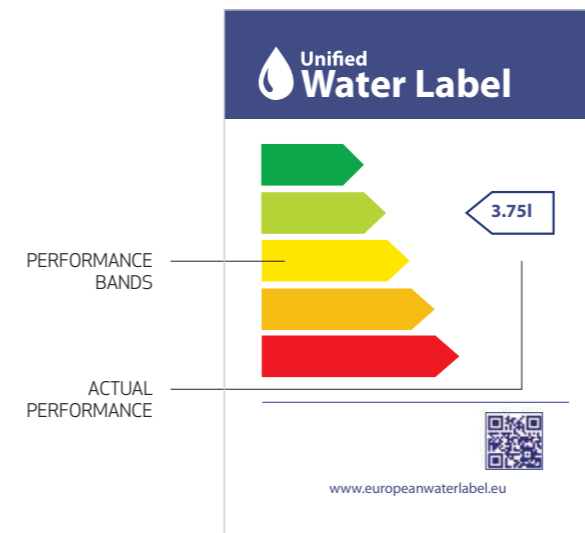
Our products are designed and developed in order to meet the most demanding international standards along with voluntary certification schemes.

All SIAMP products are subjected to rigorous and intense tests, using our own, and third party test laboratories; Our WC frames are subjected to loads of 400 kg and our flushing systems to 200 000 repetitive performance and endurance tests.

Confident our products will exceed your expectations we offer generous guarantees for peace of mind.

WC Wall frames - 10 Years
 Concealed Cisterns - 10 Years
 Flush Plates - 2 Years

UNDERSTANDING THE IMPORTANCE OF WATER SUSTAINABILITY, SIAMP CONTINUE TO DEVELOP TECHNICAL SOLUTIONS TO PROTECT THIS RESOURCE FOR FUTURE GENERATIONS. WE ARE PROUD TO SUPPORT THE FOLLOWING WATER SAVING INITIATIVES.



WATER LABEL

The Unified Water Label is a voluntary scheme adopted by manufacturers to promote the water efficiency of their products.

The scheme enables customers, to easily compare the amount of water different products use and make informed decisions that will save them water and money.

Throughout the brochure we use the Unified Water Label to indicate the water efficiency of our products as outlined by the scheme.

www.europeanwaterlabel.eu

BREEAM

BREEAM is an international scheme that provides independent third party certification, assessing of the sustainability performance of individual buildings, communities and infrastructure projects.

BREEAM WAT 01 Water consumption - assessment aims to reduce the consumption of potable water for sanitary use in new buildings from all sources through the use of water efficient components and water recycling systems.

www.breem.com

PART G

Approved Document G of The Buildings Regulation outlines the requirement for water efficiency of new dwellings.

The potential consumption of wholesome water must not exceed more than 125 litres per person per day.



WASHROOMS

SERVICE. SOLUTIONS.

SIAMP UNDERSTAND NO TWO PROJECTS ARE THE SAME, EACH HAS ITS OWN INDIVIDUALITIES THAT MUST BE CATERED FOR AND CAREFULLY MANAGED, THAT'S WHY SIAMP HAVE A DEDICATED COMMERCIAL TEAM TO SUPPORT YOUR PROJECT FROM INCEPTION TO COMPLETION.

SIAMP is aware of the key role that Building Information Modelling (BIM) will play in the future of the construction industry, as a leading manufacturer of sanitary fittings, SIAMP has invested in the creation of BIM files which are hosted by bimobject to the benefit of planners and architects worldwide.



HOTELS

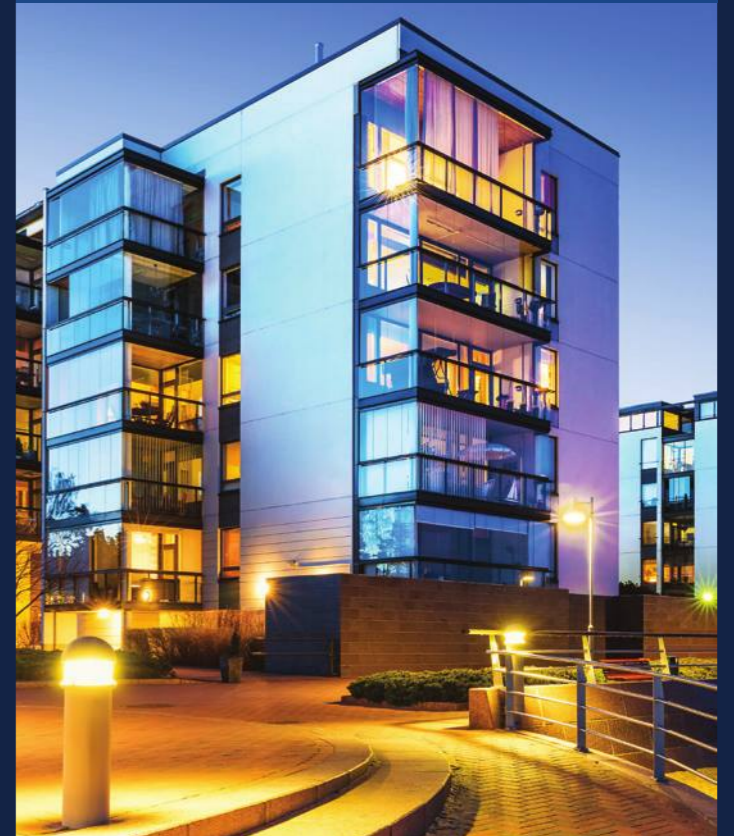


STUDENT ACCOMODATION

OFFICES



RESIDENTIAL



LEISURE

▶ NELSONS YARD

Sector: Residential
 Location: York
 Client: Northminster
 Contractor: MJM Mechanical Services
 Merchant: James Hargreaves
 Product: BCM790, Reflet 90 White Flush Plate

'A high quality development of townhouses arranged around a secure courtyard, which was subsequently shortlisted for the '2017 Northern Design Awards'



▼ CLAYTON HOTEL CITY OF LONDON

Sector: Hotel
 Location: Aldgate, London
 Client: Dalata Hotel Group
 Contractor: Closewood
 Merchant: Utopia Projects
 Product: BCM 350, Reflet 90 Black Flush Plate

'Clayton City of London hotel is a 4* deluxe hotel comprising of 212 luxury bedrooms, inspired by the Victorian textile warehouses.'



▲ STOCKPORT EXCHANGE

Sector: Offices/Mixed Use
 Location: Stockport
 Client: Muse Developments
 Contractor: A&B Engineering
 Merchant: Cu-plas Supplies Ltd
 Product: BCM 350, Smarty Chrome Flush Plate

'A phased mixed development scheme which will deliver 370,000 sq ft of offices'



◀ THE FLOWERBOWL ENTERTAINMENT CENTRE

Sector: Leisure
 Location: Preston
 Client: Barton Grange Group
 Contractor: Ameen
 Merchant: Cu-plas Supplies Ltd
 Product: BCM350, Smart IR Flush Plate (Customised with clients brand logo)

'An exciting unusual leisure complex, offering a range of exciting activities under one grass-covered roof.'

▶ THE SOAPWORKS

Sector: Offices
 Location: Salford
 Client: The Soapworks
 Contractor: NG Bailey
 Merchant: G.R. Hulllocks
 Product: Intraslim B, Smarty Chrome Flush Plate

'A stunning transformation of the former Colgate Palmolive factory providing over 100,000sq ft of office space'



Wall hung toilets help create a luxurious look whilst providing many practical benefits.

Practical use of space - having the toilet suspended introduces space by having more floor surface exposed, making the room feel larger.

Easy cleaning - the suspended toilet means the floor is clear of any obstacles when cleaning, additionally all the pipework is concealed in the wall so there are no dust traps to gather dirt.

Accessible - the height of the toilet bowl can be raised for comfort or to aid the less-abled.

CHOOSING YOUR WC WALL FRAME

Choose from three types of wall frames - tall height frame, low height frame, slim frame.

Tall height frames have a height adjustment of between 1.1m - 1.3m. Designed to be used where there are no height restrictions. The flush plate is located above the toilet seat when open.

Low height frames have a height adjustment of between 0.79m - 0.99m. Designed to be used where there is a height restriction such as a window or low studded wall with a work surface. The flush plate is positioned behind the toilet seat which must be closed to operate the flush, leaving the toilet presentable for the next user.

Slim frames are full height with adjustment of between 1.11m-1.21m. Designed to fit into a tight space with a minimum installation depth of 100mm when the waste is exiting the wall directly behind the frame, and a minimum of 123mm when the waste is exiting left, right or vertically through the floor. The flush plate is located above the toilet seat when open.



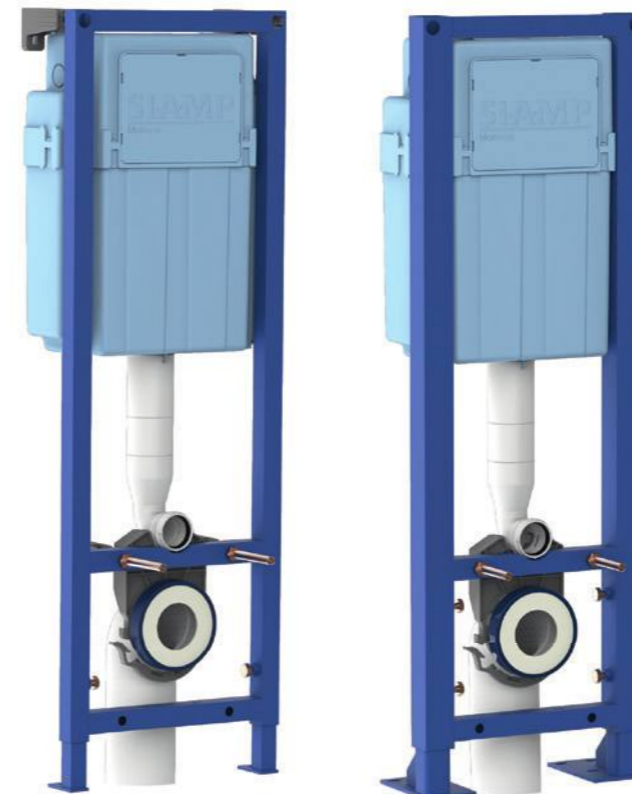
INGENIO

DESIGNED FOR THE PROFESSIONAL INSTALLER

Fast installation

- Wall fixing or Self-supporting structure - load bearing to 400kg
- Feet delivered in the installation position
- Self-braking vertical adjustment for precise height setting
- 6/4 litre dual flush, on site adjustable to 4/2.6 litre
- QUIETO 9dB delayed fill inlet valve
- Mechanical flushing
- Insulated cistern with protection against foreign bodies
- Secure water connection inside the cistern, built-in isolation valve accessible through flush plate
- WC connection kit supplied separately ready for the second fix

Height: 1100mm - 1300mm
Width: 350mm
Depth: 147-245mm



▲ Wall fixing

▲ Self-supporting



DELUXE SAMOA PACK

- 4/2.6 litre dual flush
- QUIETO 9dB delayed fill inlet valve
- Sphere chrome flush plate
- Rimless wall hung pan
- Principaute soft close toilet seat



STANDARD SAMOA PACK

- 6/4 litres dual flush, on site adjustable to 4/2.6 litre
- WRAS approved 95L delayed fill inlet valve
- Smarty chrome flush plate
- Standard wall hung pan
- Mougins toilet seat



INGENIO WC PACKS

COMPLETE WALL HUNG WC SET

WC FRAMES LOW HEIGHT

Unified Water Label  3.75 l

BCM790 & BCU790

THE LOW HEIGHT SOLUTION



◀ BCM790
Wall fixing



◀ BCU790
Self-supporting

- Wall fixing structure - load bearing to 400kg
- 6/4 litre dual flush, on site adjustable to 4/2.6 litre
- Delayed action filling
- WRAS approved 95L delayed fill inlet valve
- Mechanical flushing
- 1/2" brass isolation valve
- Insulated to prevent condensation
- Access for maintenance through the flush plate
- Includes 90° drain connection kit

Height: 790mm - 990mm
Width: 502mm
Depth: 150-245mm



BCM790 & SMARTY CHROME PLATE

WC FRAMES TALL

Unified Water Label  3.75 l

BCM350 & BCU350

TALL & COMPACT

- Wall fixing or Self-supporting structure - load bearing to 400kg
- 6/4 litre dual flush, on site adjustable to 4/2.6 litre
- WRAS approved 95L delayed fill inlet valve
- Mechanical flushing
- 1/2" brass isolation valve
- Insulated to prevent condensation
- Access for maintenance through the flush plate
- Includes 90° drain connection kit

Height: 1100mm - 1300mm
Width: 350mm
Depth: 147-245mm



▲ BCM350
Wall fixing



▲ BCU350
Self-supporting

INTRASLIM

Unified Water Label  3.75 l

BCM INTRASLIM

SLIM FOR NARROW DEPTH INSTALLATION

- Wall fixing structure - load bearing to 400kg
- 6/4 litre dual flush, on site adjustable to 4.5/3 litre
- WRAS approved 95L inlet valve
- Mechanical flushing
- 1/2" brass isolation valve
- Insulated cistern to prevent condensation
- Access for maintenance through the flush plate
- Includes 90° drain connection kit

Height: 1112mm - 1212mm
Width: 572mm
Depth: 100*-245mm

▲ Wall fixing

*minimum installation depth of 100mm when the waste is exiting the wall directly behind the frame

Unified Water Label  3.75 l

INTRASLIM

IDEAL FOR NARROW CAVITY INSTALLATIONS

- 6/4 litre dual flush, on site adjustable to 4.5/3 litres
- Supplied factory assembled for ease of installation
- WRAS approved 95L inlet valve
- 1/2" brass isolation valve
- Choice of dual flush plates
- Access for maintenance through the flush plate
- Insulated to prevent condensation
- Reversible fixing bracket





INTRA COMFORT IS DESIGNED FOR USE WITH COMFORT HEIGHT BACK TO WALL PANS INSTALLED IN FURNITURE WITH A MINIMUM HEIGHT OF 820MM

The water connection can be made from the left or right by simply reversing the cistern body.

Reversible



▲ Left

▲ Right

Typical example:
 Furniture height - 820mm
 Comfort WC height - 480mm
 Flushpipe inlet height - 430mm
 Flushpipe cut to - 90mm

Unified Water Label 3.75 l

INTRA COMFORT BOTTOM INLET



- 6/4 litre dual flush on site adjustable to 4/2.6 litre
- Water connection can be made left or right
- Supplied pre-assembled for ease of installation
- 1/2" inlet connection
- WRAS approved delayed fill inlet valve
- WRAS approved flush valve
- EPS insulation available
- Front and top access for maintenance
- Height and depth adjustable flush pipe

Unified Water Label 3.75 l

INTRA COMFORT SIDE INLET



- 6/4 litre dual flush on site adjustable to 4/2.6 litre
- Water connection can be made left or right
- 1/2" inlet connection
- WRAS approved inlet valve
- WRAS approved flush valve
- EPS insulation available
- Front and top access for maintenance
- Height and depth adjustable flush pipe

Unified Water Label 3.75 l

INTRA CABLE

DESIGNED FOR FURNITURE

Suitable for compact furniture

- 6/4 litre dual flush on site adjustable to 4/2.6 litre
- Supplied factory assembled for ease of installation
- WRAS approved inlet valve
- WRAS approved cable operated flush valve
- Access cover allows for top and front entry for maintenance
- Insulated to prevent condensation
- Height and depth adjustable flush pipe
- Fits 500mm wide compact furniture

Connection Options

- Bottom fill plastic
- Bottom fill brass
- Side fill brass

ECO Option

- Delayed fill inlet valve (Bottom fill only)



Unified Water Label 3.75 l

INTRA PNEUMATIC

DESIGNED FOR FURNITURE

Remote flushing

- 6/4 litre dual flush
- Supplied factory assembled for ease of installation
- WRAS approved inlet valve
- 2m air pipe with corrugated pipe protection
- Chrome dual flush button included
- Access cover allows for top and front entry for maintenance
- Insulated to prevent condensation
- Height and depth adjustable flush pipe
- Fits 500mm wide compact furniture

Connection Options

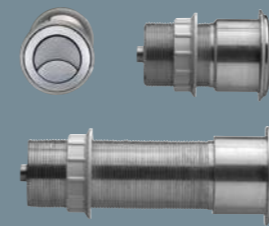
- Bottom fill plastic
- Bottom fill brass

ECO Option

- Delayed fill inlet valve



CONCEALED CISTERN ACCESSORIES



▲ Chrome

EXTENDED CABLE PUSH BUTTON

- Button made of ABS
- Body made from aluminum*
- Cable actuation
- Recessed installation
- 22mm
- 70mm
- 150mm



PNEUMATIC ANTI-VANDAL BUTTON

- Plate made of stainless steel
- Tamper-proof system
- Pneumatic actuation
- Dimensions in mm. : h140 x w140 x d8
- For use with Intra Pneumatic



▲ Chrome

DUAL FLUSH PNEUMATIC BUTTON CHROME

- Made from ABS
- Flush sitting buttons
- Pneumatic actuation
- For use with Intra Pneumatic



▲ Chrome

▲ White

SINGLE FLUSH RAISED PNEUMATIC BUTTON

- Made from ABS
- Raised button to facilitate activation by people with reduced mobility, seniors or young children
- Pneumatic actuation
- For use with Intra Pneumatic

*Aluminum body applies only to 70mm & 150mm buttons.

Combining elegant design with reliable functionality.

Our wide range of flush plates offer a variety of designs, materials and creative finishes to complement any bathroom.

CHOOSING YOUR FLUSH PLATE

Choose from a range of ABS, wood, glass or metal.

ABS plates offer contemporary design in a range of popular finishes to co-ordinate with mainstream bathroom fittings.

ABS RANGES:

- Contactless
- Sphere
- Smarty
- Segment
- Square
- Media
- Moon
- Ying Yang

Creative decor plates allow you to stay on-trend with the latest home interior designs. Our Album range offers over 300 decorations with a selection of finishes and textures.

CREATIVE DECOR RANGES:

- Album 90
- Album 360

Glass plates provide a touch of elegance bringing light and depth into the room.

GLASS RANGES:

- Contactless
- Reflet 90
- Reflet 360

Metal plates are the perfect choice for high traffic public areas. Made from aluminum alloy and treated with an anti fingerprint coating these plates are easy to clean and robust.

METAL RANGES:

- Smart
- Smart MVI Infra-red
- Monovolume



OUR NEW RANGE OF AUTOMATIC FLUSH PLATES BRINGS GREATER HYGIENE AND COMFORT FOR THE USER.

ELEGANT GLASS DESIGN COMBINED WITH LEDS BRING COLOUR & AMBIANCE INTO THE ROOM

The flush plate automatically detects the user and regulates the flush depending on the duration of use.

<90 seconds activates a half flush
>90 seconds activates a full flush.

CONTACTLESS

GLASS

- Colour changing LEDs



Black Glass LED



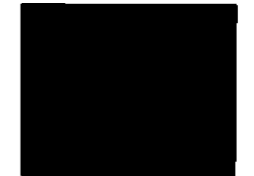
Black Glass

CONTACTLESS

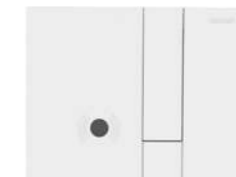
ABS



Bright Chrome



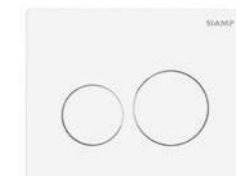
Black



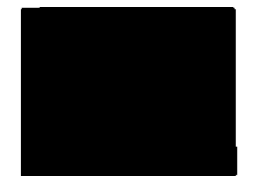
White

SPHERE

ABS



White



Matt Black



White/Bright Chrome



White/Matt Chrome



Bright Chrome



Matt Chrome

INGENIO

Contactless & Sphere are designated to INGENIO WC Frames



Nelsons Yard

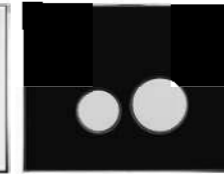
'A high quality development of townhouses arranged around a secure courtyard, which was subsequently shortlisted for the '2017 Northern Design Awards'

INTRASLIM B & REFLET 90 WHITE

REFLET 360
GLASS

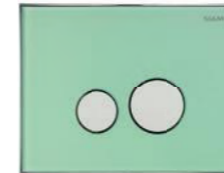


White/Matt Chrome



Black/Matt Chrome

Also available with Bright Chrome buttons.

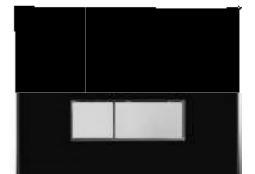


Natural Green/Matt Chrome

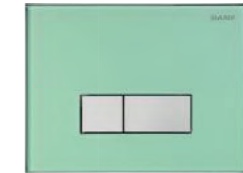
REFLET 90
GLASS



White/Matt Chrome

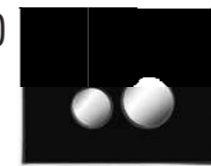


Black/Matt Chrome



Natural Green/Matt Chrome

ALBUM 360
CREATIVE DECORS

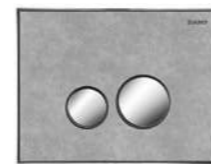


Black/Bright Chrome



Natural Oak/Bright Chrome

Also available with Matt Chrome buttons.



Stone Grey/Bright Chrome

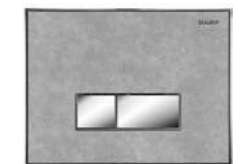
ALBUM 90
CREATIVE DECORS



Black/Bright Chrome



Natural Oak/Bright Chrome



Stone Grey/Bright Chrome

ALBUM - CUSTOMISABLE

CHOOSE A DECOR THAT COMPLIMENTS YOUR INTERIOR DESIGN

CHOOSE...

...YOUR BUTTON SHAPE



ALBUM 360



ALBUM 90

...YOUR BUTTON FINISH

Matt Chrome: this surface impresses with its soft and natural touch

Chrome: this surface is particularly solid and fingerprint proof

...FROM OVER 300 DECORS

Colour chart available on request



PLAIN COLOURS

WOODGRAIN

MINERAL

HUNDREDS OF COMBINATIONS



ALBUM 360: Metal effect Chrome buttons



ALBUM 90: Gentian blue Chrome buttons

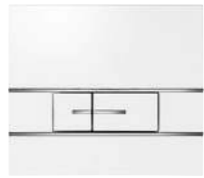


ALBUM 360: Clear marble Matt chrome buttons

FLUSH PLATES

SEGMENT

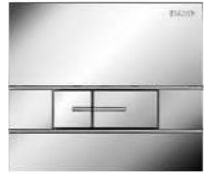
ABS
SEGMENTED
BY DELICATE
CHROME INSERTS



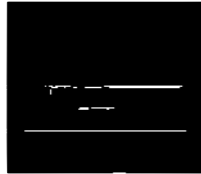
White/
Bright Chrome



Stainless Steel/
Bright Chrome



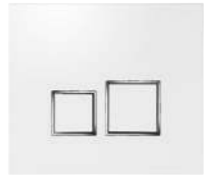
Bright Chrome/
Matt Chrome



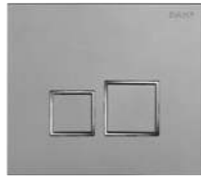
Black/
Bright Chrome

SQUARE

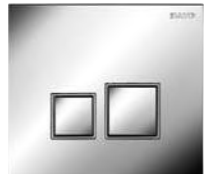
ABS
TRUE SQUARE
DESIGN WITH
CHROME INSERTS



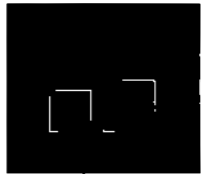
White/Bright Chrome



Stainless Steel/
Bright Chrome



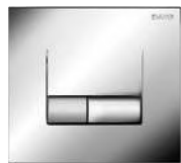
Bright Chrome/
Matt Chrome



Black/
Bright Chrome

SMARTY

ABS
CONTEMPORARY
DESIGN



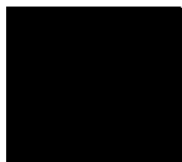
Bright Chrome



Matt Chrome



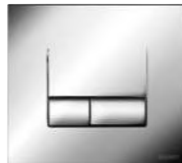
White



Black

SMART

METAL
ANTI FINGER PRINT



Bright Chrome



Dark Satin



Matt Chrome



Brushed Stainless
Steel

BCM350 & SQUARE BRIGHT CHROME

FLUSH PLATES

YIN YANG

ABS



White



Bright Chrome



Bright Chrome/
Matt Chrome



Matt Chrome/
Bright Chrome

LEMON

ABS



Bright Chrome



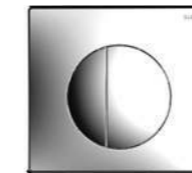
Matt Chrome

MOON

ABS



Bright Chrome



Bright Chrome



Brushed Stainless Steel

MEDIA

ABS

MONOVOLUME

ANTI VANDAL

SMART INFRARED

CONTACTLESS FLUSHING



Matt Chrome

WALL FRAME & FLUSH PLATE COMPATIBILITY

	INGENIO WALL FIXING	INGENIO SELF SUPPORTING	DELUXE SAMOA PACK	STANDARD SAMOA PACK	BCM350	BCU350	BCM790	BCU790	BCM INTRASLIM	INTRASLIM B
CONTACTLESS	●	●	●	●						
SPHERE	●	●	SUPPLIED	●						
REFLET 360	●	●	●	●	●	●	●	●	●	●
REFLET 90	●	●	●	●	●	●	●	●	●	●
ALBUM 360	●	●	●	●	●	●	●	●	●	●
ALBUM 90	●	●	●	●	●	●	●	●	●	●
SEGMENT	●	●	●	●	●	●	●	●	●	●
SQUARE	●	●	●	●	●	●	●	●	●	●
SMARTY	●	●	●	SUPPLIED	●	●	●	●	●	●
SMART	●	●	●	●	●	●	●	●	●	●
YIN YANG					●	●	●	●	●	●
LEMON					●	●	●	●	●	●
MOON					●	●	●	●	●	●
MEDIA					●	●	●	●	●	●
MONOVOLUME					●	●	●	●	●	●
SMART INFRARED					●	●				

CODE	PRODUCT DESCRIPTION
INGENIO WC FRAMES	
10002233	INGENIO Wall Fixing
10002234	INGENIO Self-supporting
34117167	INGENIO WC connection kit
INGENIO FLUSH PLATES	
31261060	Sphere White
31261260	Sphere Chrome
31261460	Sphere White / Chrome
31261160	Sphere Matt Chrome
31261360	Sphere White / Matt Chrome
10003392	Sphere Black
31191060	Smarty White
31191260	Smarty Chrome / Matt
31191160	Smarty Matt / Chrome
10003493	Smarty Black
31204060	Square White
31204160	Square Black
31204260	Square Inox / Stainless Steel
31207260	Square Bright
31171060	Segment White
31171160	Segment Black
31171260	Segment Stainless Steel
31172260	Segment Bright
31169060	Album 90 Natural Oak
31169160	Album 90 Stone Grey
31169260	Album 90 Black
31179060	Album 360 Natural Oak
31179160	Album 360 Stone Grey
31179260	Album 360 Black
31193160	Reflet 90 Black / Matt Chrome
31193260	Reflet 90 Natural Green / Matt Chrome
31193460	Reflet 90 White / Matt Chrome
31198160	Reflet 360 Black / Matt Chrome
31198260	Reflet 360 Natural Green / Matt Chrome
31198460	Reflet 360 White / Matt Chrome
31196160	Reflet 90 Black / Chrome
31196260	Reflet 90 Natural Green / Chrome
31196460	Reflet 90 White / Chrome
31199160	Reflet 360 Black / Chrome
31199260	Reflet 360 Natural Green / Chrome
31199460	Reflet 360 White / Chrome
31187460	SMART Chrome
31187260	SMART Matt Chrome
31187960	SMART Dark Satin
31187360	SMART Brushed Stainless
10000650	Contactless Automatic flush plate Black
10000651	Contactless Automatic flush plate White
10000652	Contactless Automatic flush plate Chrome
10000653	Contactless Automatic flush plate Glass
10000654	Contactless Automatic flush plate Glass LED
INGENIO SAMOA PACKS	
31185815	INGENIO Standard Samoa Pack
31233810	INGENIO Deluxe Samoa Pack
BCM / BCU WC FRAMES	
31231513	BCM350 1.1m Eco Wall Frame
31210410	BCU350 1.1m Eco Self-supporting Wall Frame
31279010	BCM790 0.79m Eco Low Height Wall Frame
10003429	BCU790 0.79m Eco Self-supporting Low Height Wall Frame
10002453	BCM Intraslim

CODE	PRODUCT DESCRIPTION
BCM / BCU FLUSH PLATES	
31191010	Smarty White
31191210	Smarty Chrome / Matt
31191110	Smarty Matt / Chrome
10003407	Smarty Black
31204010	Square White
31204110	Square Black
31204210	Square Inox Stainless Steel
31207210	Square Bright
31171010	Segment White
31171110	Segment Black
31171210	Segment Stainless Steel
31172210	Segment Bright
31169010	Album 90 Natural Oak
31169110	Album 90 Natural Oak
31169210	Album 90 Stone Grey
31179010	Album 90 Black
31179110	Album 360 Natural Oak
31179210	Album 360 Stone Grey
31193110	Album 360 Black
31193210	Reflet 90 Black / Matt Chrome
31193410	Reflet 90 Natural Green / Matt Chrome
31198110	Reflet 90 White / Matt Chrome
31198210	Reflet 360 Black / Matt Chrome
31198410	Reflet 360 Natural Green / Matt Chrome
31196110	Reflet 90 Black / Chrome
31196210	Reflet 90 Natural Green / Chrome
31196410	Reflet 90 White / Chrome
31199110	Reflet 360 Black / Chrome
31199210	Reflet 360 Natural Green / Chrome
31199410	Reflet 360 White / Chrome
10003608	Reflet 360 White / Matt Chrome
10003609	Media Flush Plate Chrome
31180010	Yin Yang White
31185310	Yin Yang Chrome / Matt
31185010	Yin Yang Matt / Chrome
31185316	Yin Yang Bright Chrome
31181410	Lemon Chrome / Matt
31181310	Lemon Matt / Chrome
31187410	SMART Chrome
31187210	SMART Matt Chrome
31187910	SMART Dark Satin
31187310	SMART Brushed Stainless
31195010	SMART MVI Infra-red Matt Chrome (mains)
31188810	MONO Anti-Vandal Single Flush Stainless Steel
CONCEALED CISTERNS	
	Intra Comfort Concealed Cistern Bottom Inlet
	Intra Comfort Concealed Cistern Side Inlet
31014710	Intra Concealed Cistern Bottom Inlet
31015010	Intra Eco Concealed Cistern Bottom Inlet
31014810	Intra Concealed Cistern Side Inlet
31014411	Intra Pneumatic Cistern Bottom Inlet
31015410	Intra Eco Pneumatic Cistern Bottom Inlet
31903210	Intraslim B (push plate sold separately)
CONCEALED CISTERN ACCESSORIES	
31255210	Pneumatic Anti-Vandal Single Flush Button Stainless Steel
31500607	Extended Cable Command DV800/22
31500510	Extended Cable Command DV800/70
31500410	Extended Cable Command DV800/150
31255110	Dual Flush Pneumatic Button Chrome
31255510	Single Flush Raised Pneumatic Button Chrome
31253510	Single Flush Raised Pneumatic Button White

SIAMP

Sanitary expertise
& water friendly

SIAMP

Unit C2
Meadowbank Business Park
Tweedale Way
Hollinwood
Oldham
OL9 8EH

T 0161 681 2120
F 0161 681 2130
W www.siamp.co.uk
E info@siamp.co.uk
T twitter.com/siampuk
F facebook.com/siampuk
Y youtube.com/user/siampshop
L linkedin.com/company/9422871/